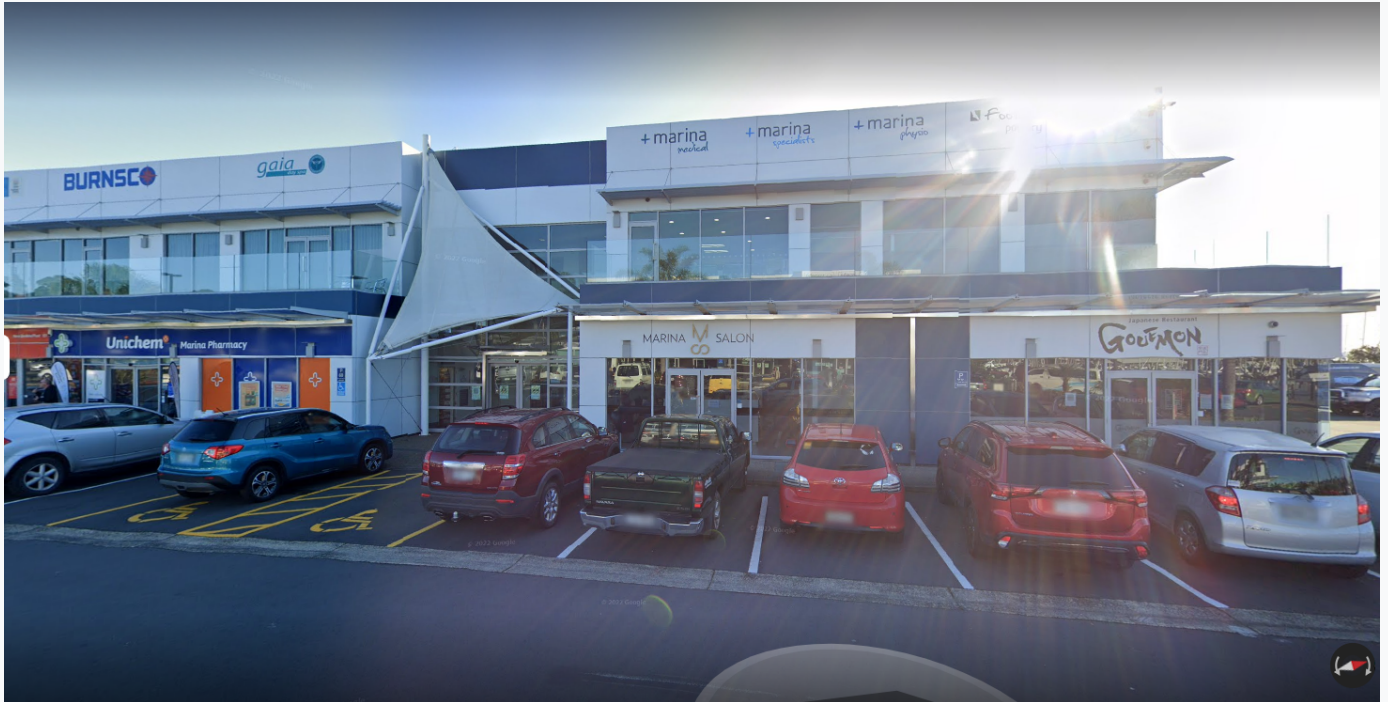


## An Introduction to Marina Medical

Flu Vaccines Available 1st April, [Click here for more information and how to book](#)

Booster COVID Vaccines Available , [Click here for more information and how to book](#)

New Patients are Welcome to Enrol at Marina Medical, Come and see us or [fill out the enrolment forms online](#).



Marina Medical is situated on the upper floor of the modern architecturally designed Compass Building at the Half Moon Bay Marina.

We have a wide staircase and easy elevator access.

All the consulting rooms and waiting room command stunning views over the marina northwards towards Rangitoto and Browns Islands.

We provide community based medical care.

Our services cover medical care for the whole of life - from babies to aged care.

We have a team that can provide a comprehensive range of services to you and your family.

Our team includes Doctors, Nurse Practitioner, Nurses, Clinical Pharmacist, Health Improvement Practitioner, Health Coach, Dietitian and Psychologists.

Marina Medical has been awarded Cornerstone Accreditation by the Royal NZ College of General Practitioners and continues to maintain accreditation.

To achieve and retain accreditation a clinic has to undergo ongoing assessment of practice systems, physical factors, and all factors affecting patients against the College standard, Aiming for Excellence, within a quality improvement framework.



Children under the age of 14 are no longer charged a fee for consultations at Marina Medical.  
This is for medical and ACC visits.  
This only applies to enrolled patients.

(note there may be a small charge for some consumables)

# Lower cost general practice visits

## For Community Services Card holders enrolled with a general practice

- People who have a Community Services Card and their dependants will pay less for general practice visits.
- More people will be able to get a Community Services Card, so they can have lower cost general practice visits. They will be sent their Community Services Card automatically.

## For 13 year olds enrolled with a general practice

From 1 December 2018, zero fees for children aged 12 and under are being extended to also include 13 year olds.

This means children aged 13 and under won't be charged:

- a fee for visits at most general practices
- a fee for after-hours services at participating clinics and pharmacies
- the regular \$5 prescription fee.



### TO FIND OUT MORE



TALK to  
your general  
practice team



TALK to  
your  
pharmacist



VISIT

[www.health.govt.nz/visiting-a-doctor](http://www.health.govt.nz/visiting-a-doctor)  
OR [www.workandincome.govt.nz](http://www.workandincome.govt.nz)



CALL

Healthline on  
0800 611 116



CALL

Ministry of Health  
on 0800 855 066





We are a member clinic of [East Health Trust Primary Health Organisation](#), enabling us to provide subsidised patient fees and prescriptions for our enrolled patients, and also to offer a range of programmes for patients with higher health needs, such as those with Diabetes, Heart Failure and Lung disease.

---

At Marina Medical we are not just about a great view. We are a group of dedicated doctors, nurses, dietitian, and administrators working together to provide a primary healthcare service second to none.

It is a beautiful environment to work in and the most frequently heard question from patients is "how do you get any work done with that view?"

We are working closely in association with other healthcare providers within the Compass Building to provide a complete healthcare package - including [Marina Specialists](#), [Marina Physio](#), [Marina Fitness](#) and [Unichem Marina Pharmacy](#).

We are happy to be contacted by portal message, telephone, or email. If you need a repeat prescription we ask that you use the portal to order your prescription or ring us and select the option to leave a detailed message regarding your repeat prescription.

---



